



Swing Cylinder (Without Overload Protection)

Flange mounting, single acting / double acting



Description :

Swing cylinders are pull type cylinders. The piston rotates by 90° during the swing stroke, followed by straight clamping stroke due to the internal cam.

Application :

The clamping strap rotates by 90° while clamping and declamping. Due to the swing action, loading and unloading of the job is very easy. In the unclamped position, the workpiece area is free from the strap.

Versions :

Type of cylinder

- 1 **SW** - Single acting (spring return)
- 1 **DSW** - Double acting
- 1 **DSWM** - Double acting Manifold Mounting

Swing direction (While clamping & looking from rod side)

- 1 **CW** - Clockwise
- 1 **CCW** - Counter clockwise

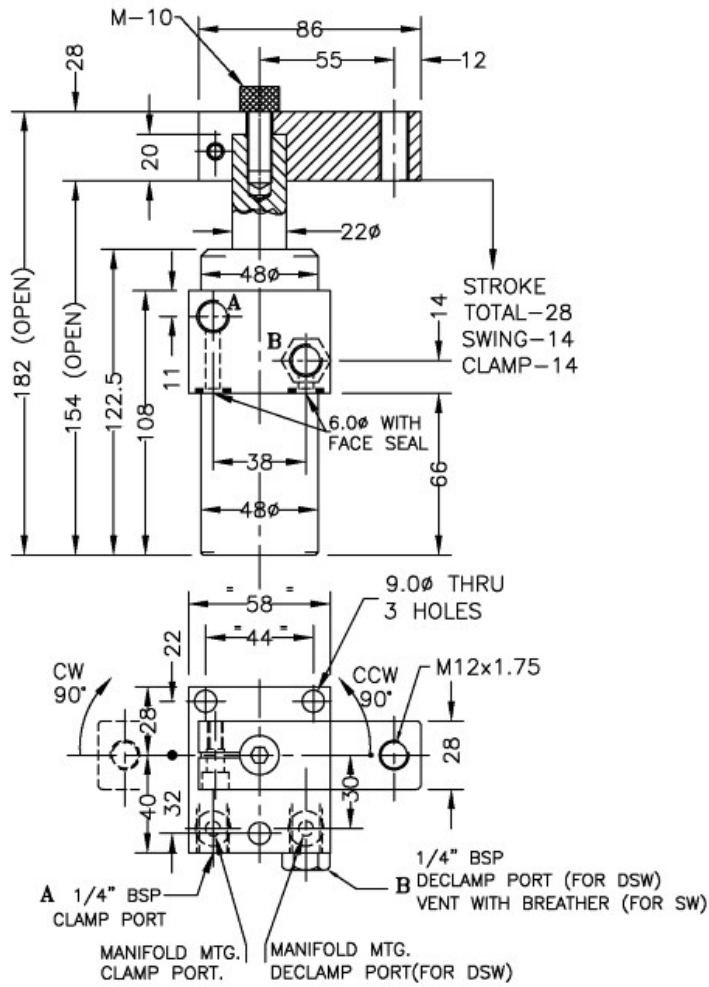
Specifications :

- 1 Bore diameter - 30 mm.
- 1 Maximum oil pressure - 200 bar.
- 1 Minimum oil pressure - 20 bar.
- 1 Oil volume - clamp - 9.2 cc.
- 1 Oil volume - declamp - 19.8 cc.
- 1 Force at 150 bar - 5.0 kN.
- 1 Weight of the cylinder - 2.8 kg.

Notes :

- 1 To avoid damage to the swing mechanism
- 1 Hold the clamping strap in a vice or spanner, while tightening and loosening the cap screw (M 10).
- 1 Clamp the job in the straight clamping stroke only.
- 1 Double acting cylinders are suitable with the hydraulic power unit.
- 1 Single acting cylinders are suitable with the hydropneumatic intensifier.
- 1 Do not exceed the standard strap length.
- 1 Adjust the oil flow rate in such a way so that the total clamping time will be more than one second.
- 1 For height adjustment, either use a spacer at the mounting plate or adjust the clamping bolt on the strap. (fig. below)
- 1 For horizontal mounting of single acting cylinders, weight of the strap should assist the declamping swing stroke.
- 1 For single acting, spring return cylinder, a breather is provided. It should be protected from cutting liquids and coolants.
- 1 For ordering the seal kit, add the prefix "S" to the part number.
- 1 **For Non-standard cylinder requirements, Please contact sales@hypowerclamps.com.**

Dimensional details :



TYPE	PART NO. WITH STRAP
SW CW	3541500
SW CCW	3541600
DSW CW	3541700
DSW CCW	3541800
DSWM CW	3541701
DSWM CCW	3541801

All dimensions are in mm, Overall dimension tolerance ± 0.5 mm.
Subject to change for improvement. (Revision - Aug-24)

Application Example :

